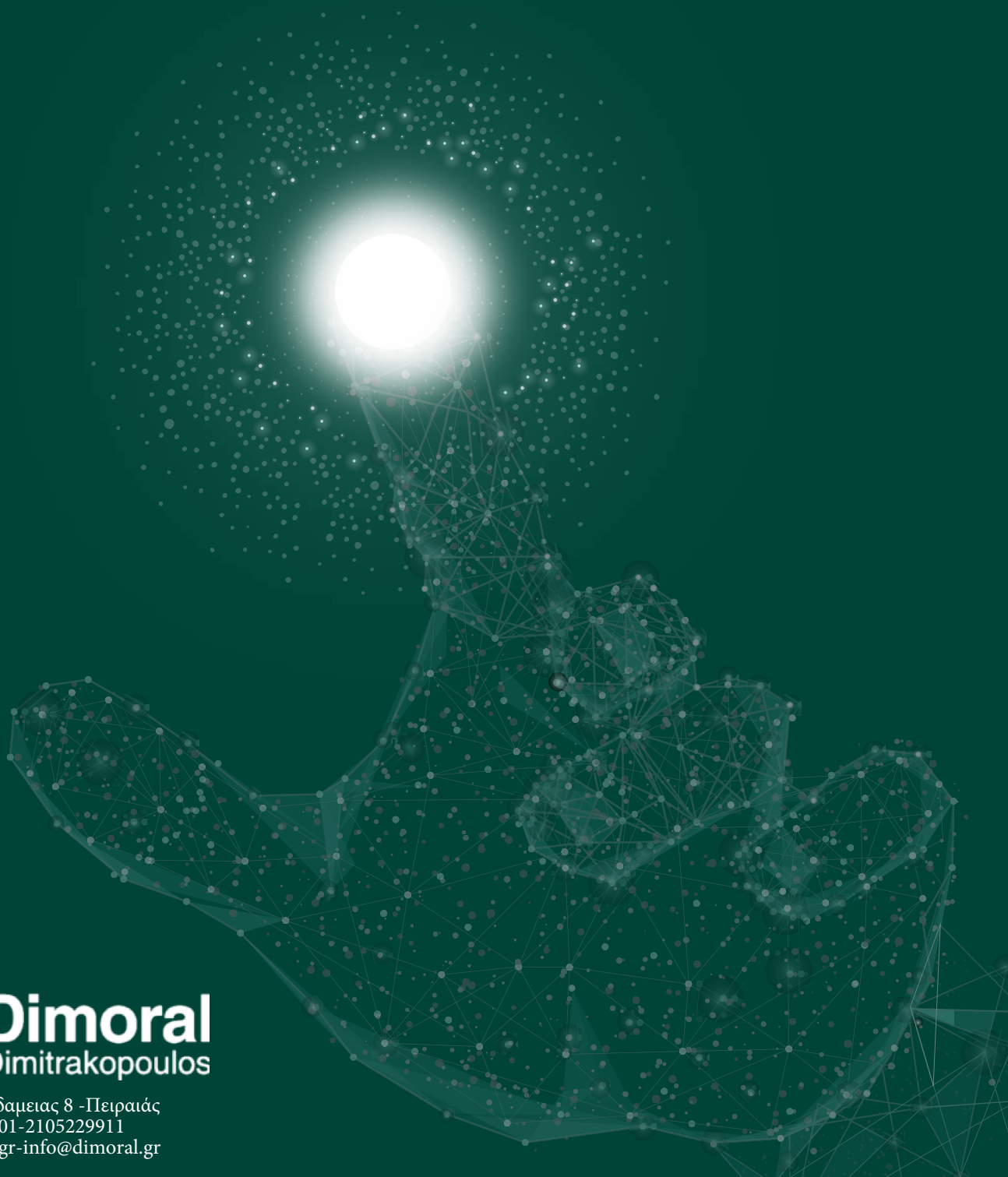


# S1

**NEW BONE  
NEW LIFE**



 **Dimoral**  
Dimitrakopoulos

Πλατεία Ιπποδαμειας 8 - Πειραιάς  
Τηλ: 2104172501-2105229911  
[www.dimoral.gr](http://www.dimoral.gr) - [info@dimoral.gr](mailto:info@dimoral.gr)

# Concept of customized Bone graft material



## Sticky Bone without Blood Collection!

### Bovine Bone Mineral

Unable to mold  
No space maintenance

No adhesioin, No fixation

Blood collection to make sticky bone

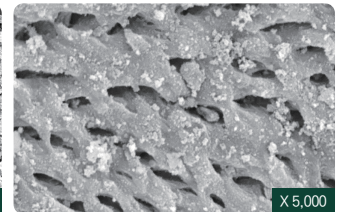
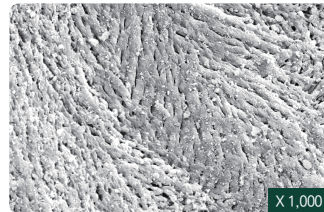


Mouldable & Customizing

Customized build up

Sticky bone made easily with saline or blood

## BOVINE XENOGRAFT



### S1 has similar structural characteristics with human bones

Due to its high porosity, S1 provides the most optimal environment for promoting osteoblast adhesion, blood vessel formation, and bone regeneration.

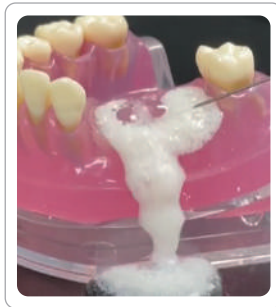
# NEW BONE NEW LIFE

## Keywords



S1 (Bovine Bone)

VS



Bovine Bone Mineral

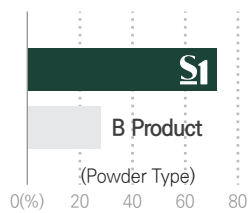
- 1 Excellent adhesion and fixation
- 1 Rigid Space Maintenance
- 1 Excellent osteoconduction



S1 (Bovine Bone)

- 1 Easy to manipulate
- 1 Various indications

### 1 High porosity



#### Porosimeter Test

- Percentage of porosity is more than 70%
- High porosity allows rapid penetration of growth factors

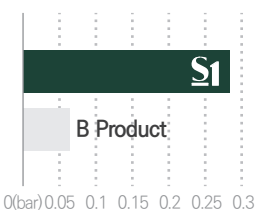
### 1 High wettability



#### Wettability Test

- Porous structure makes blood circulation easily

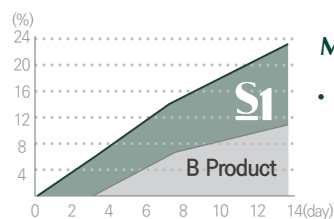
### 1 Excellent shape maintenance



#### Pressure Test

- Perfect shape maintenance against high pressure from outside compared to other bone

### 1 Bone formation rate



#### Mass Increase Test

- Bone formation test using simulated body fluid

# NEW BONE NEW LIFE

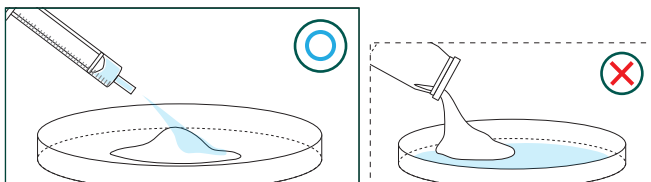
## Quick Guide

Please apply the liquid as indicated

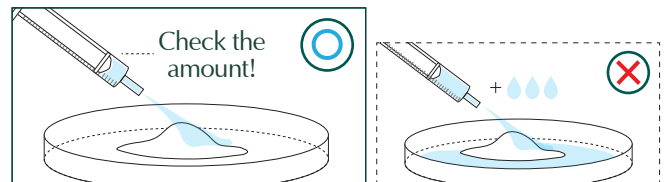
Each package is for one-time use only

Do not mix with other bonegraft

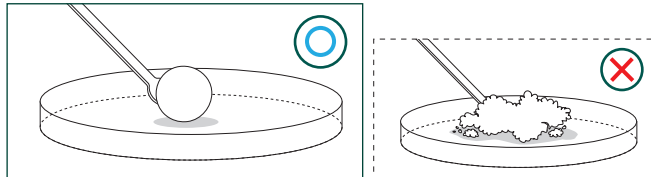
Mix with solutions well enough



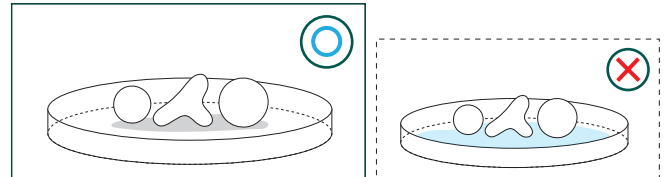
1 Place S1 in the tray and hydrate the materials with saline



1 Please use the recommended amount of saline only.



1 Knead the dough enough for at least 30 seconds by using hands or tools to form a lumpy shape before using S1.



1 Do not soak in saline after shaping for a surgery

## Recommended amount of saline

TYPE	PARTICLE SIZE (mm)	WEIGHT (g)	SOLUTION AMOUNT (cc)
Powder	0.2~1.0	0.25	<b>0.35</b>
		0.5	<b>0.7</b>
		1.0	<b>1.4</b>

TYPE	PARTICLE SIZE (mm)	WEIGHT (g)	SOLUTION AMOUNT (cc)
Chip	1.0~2.0	0.25	<b>0.45</b>
		0.5	<b>0.9</b>
		1.0	<b>1.8</b>
		2.0	<b>3.6</b>

# Innovative technology

## Check it out for yourself !



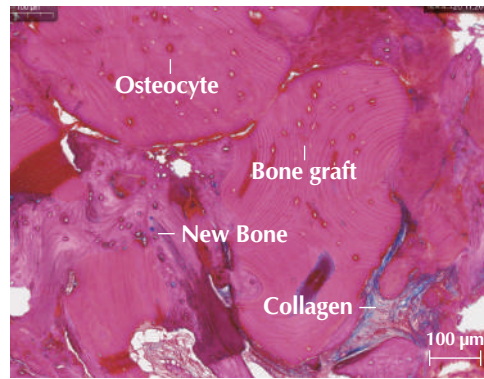
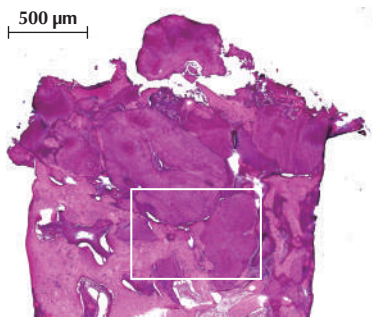
Innovative Technology, S1

### Biopsy

※ Hematoxylin & Eosin Stain

#### Case 1 | #14, Ridge augmentation

Patient Info : 65 years-old, female

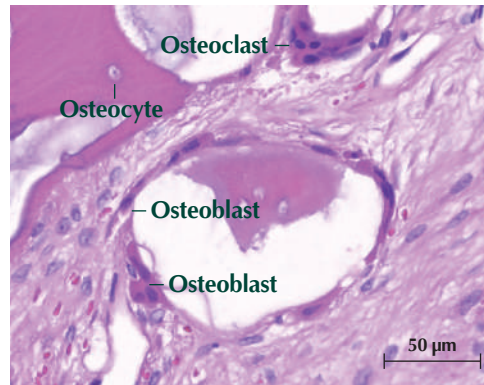
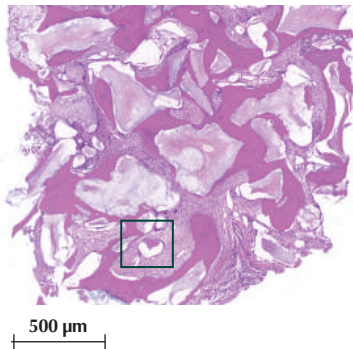


#### Clinical Opinion

- Excellent bone formation around bone graft material
- The graft materials appeared surrounded by newly formed bone
- No sign of inflammation or immune rejections

#### Case 2 | #26, Sinus graft

Patient Info : 73 years-old, female



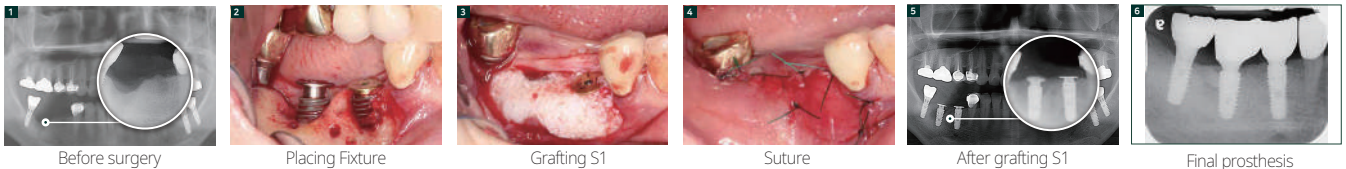
#### Clinical Opinion

- Excellent osteoconduction as it shows osteoclasts and new bone formation
- No evidence of inflammation or immune rejection

### Clinical cases

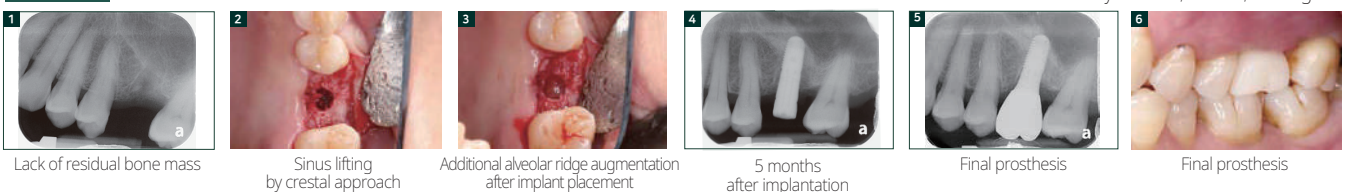
#### Case 1

Patient Info : 59 years-old, female, Ridge augmentation



#### Case 2

Patient Info : 59 years-old, female, Sinus graft



# S1

NEW BONE  
NEW LIFE

**MedPark**  
Your Reliable Partner

**Biomaterials Manufacturer MedPark Co.,Ltd.**  
**TEL** +82 51 301-8777 **E-mail** biz@med-park.net

COPYRIGHT© 2020 MedPark Co., Ltd. ALL RIGHTS RESERVED

 **Dimoral**  
Dimitrakopoulos